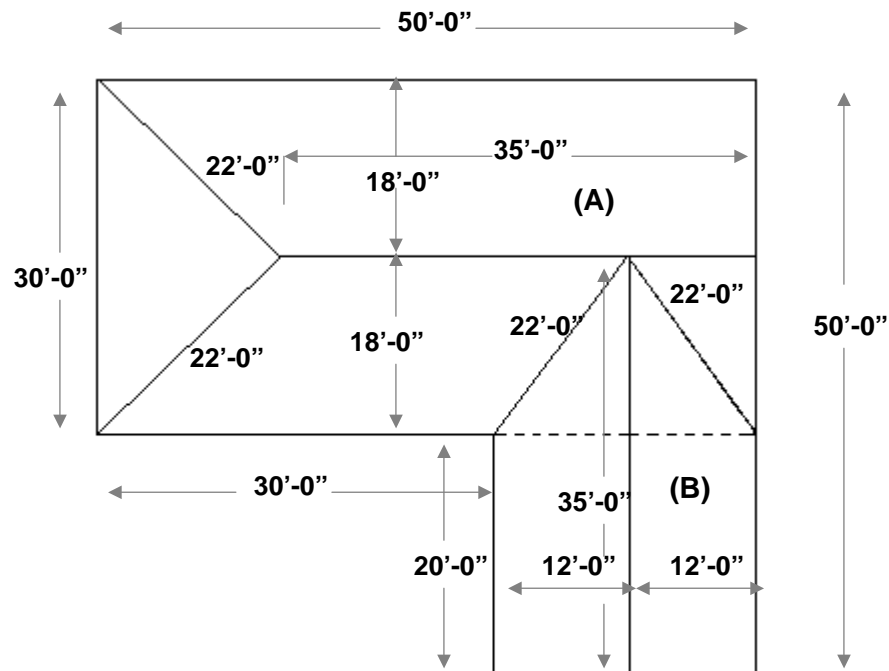




Estimating Futurelok Shingle



Step #1 Divide the Roof- Divide the above roof plan into two parts (A) and (B). The coverage dimensions for **Futurelok Shingles** are 17.5" (1.5 ft.) wide by 8.5" (.7 ft.) high.

Step #2 Calculate Part A- In Part (A) the length of the fascia is 50 feet. To determine how many shingles that will be needed horizontally, divide 1.5 feet into 50 feet = 33.3 or 34 shingles. The rafter measurement is 18 feet. To determine the number of shingles needed vertically to the ridge, divide 18 feet by .7 feet = 25.7 or 26 shingles to the ridge. The number shingles needed to cover Part (A) would be 34 shingles x 26 shingles = 884 x 2 (because the rafter length is the same on both sides of the roof) = 1768 **Futurelok Shingles** for part (A).

Step #3 Calculate Part B - In Part (B) the length of the fascia is 20 feet. As explained in Part (A), divide 1.5 into 20 feet = 13.33 or 14 shingles. The rafter measurement is 12 feet. Divide this by .7 feet = 17.2 or 18 courses to the ridge. The total number of panels needed in Part (B) is 14 x 18 x 2 (rafter length the same on the other side) = 504 **Futurelok Shingles** for Part (B).



**FUTURE
ROOF®**
S Y S T E M S

*Our Future is
Your Satisfaction*

9969 River Way Delta, BC V4G 1M8
Tel: (800) 959-8089 or (604) 587-3588 **Fax:** (604) 953-1005
www.futureroof.com

Step #4 Calculate Waste - To calculate waste multiply the linear feet of hips and valleys by .2. For example, the linear feet of the hips is 44 feet and the linear feet of valleys is 44 feet = 88 feet total. To determine the waste multiply 88 feet of hips and valleys by .2 = 17.6 or 18 shingles waste.

Conclusion: The total number of shingles needed for the roof diagram on page #1 will be Part (A) plus Part (B) plus Waste or 1768 shingles +504 shingles +18 shingles = 2290 divided by 96 pieces per square = 23.85 squares or 24 squares of **Futurelok Shingle** required.

Calculating the trims and accessories:

Hip and Ridge Cap coverage is 11". Add the hip and ridge = 114 feet x 12" = 1368"
Divide this by 11"= 125 pieces. add 10% = 137 pieces of hip and ridge cap.

Note: All the accessories come in 10 ft. lengths:

Valley = 44 feet or 5 pieces valley (accounting for overlaps).

Rake or Gable = 60 feet or 7 pieces of rake or gable (accounting for overlaps),

Starter = 150 feet fascia or 16 pieces of starter (accounting for overlaps).

Quick Formula:

The following formula can be used for quickly quoting the approximate number of squares. Again, using the roof example on page #1.

Step #1- Determine the actual square footage without waste. Part (A)= 1800 s/f.

+ Part (B)- 480 s/f. = 2280 s/f.

Step #2- Determine the linear feet of hips and valleys = 88 feet.

Step #3- Add Step #1 and Step #2- 2280 s/f +88 feet = 2368 s/f.

Step #4- Multiply the total by 1.05. or 2368 s/f x 1.05 = 2486 s/f or 24.86sqs.